

# FASTLINE



Optik: Linsler  
Material: Natureloxerad Aluminium  
Ljuskälla: LED

## Egenskaper

Längd 1500mm  
Vikt 4,5 kg  
Täthetsklass IP20 alternativt IP54  
Vandalklass IK08  
Elsäkerhetsklass I alt. II



## ANVÄNDNINGSMÅN

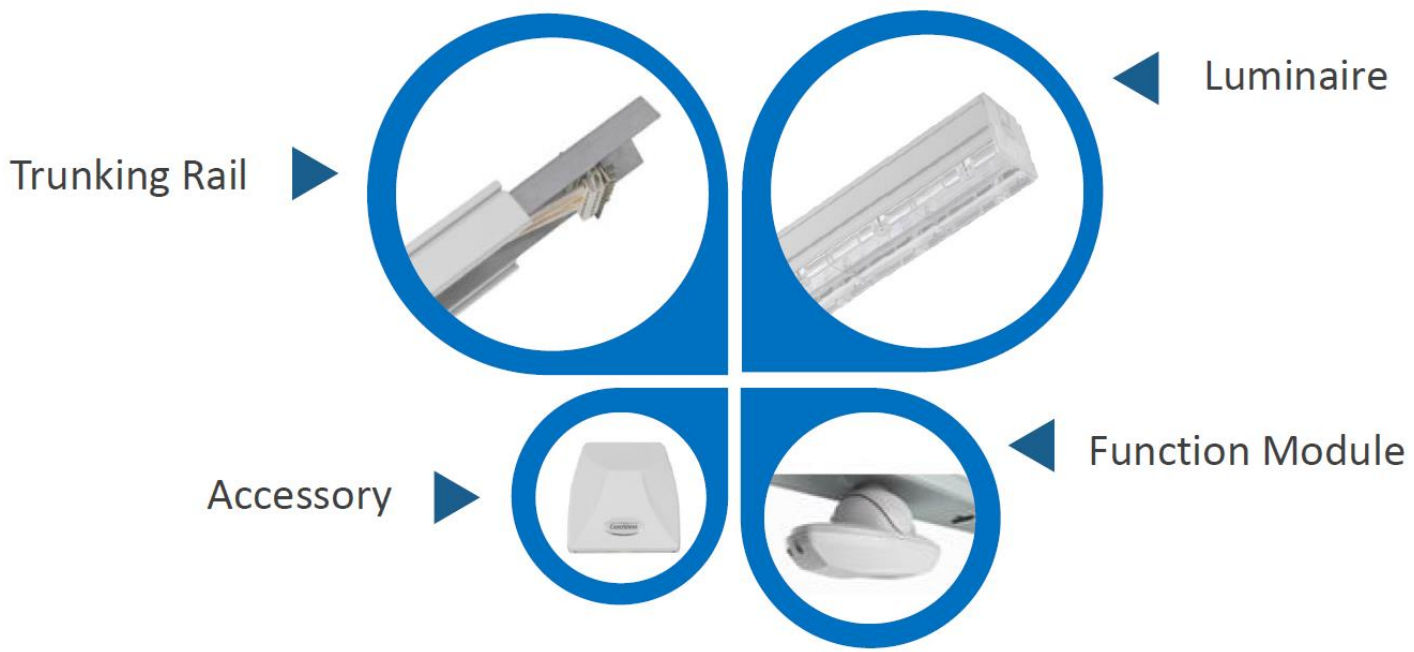
- Butik
- Kontor
- Hotell
- Bostadshus
- Sjukhus
- Parkeringsgarage
- Industri
- Lager
- Sporthallar





## SPECIFIKATION

<b>Certifierad:</b>	Ja, IP20 alt. A-line IP54, armatur uppfyller kraven i EN60598
<b>Ljuskälla:</b>	LED
<b>Överspänningskydd, Transientskydd:</b>	4 kV
<b>Programmerbar version:</b>	DALI
<b>Ej programmerbara versioner:</b>	35W, 50W
<b>Ljusutbyte:</b>	4000K 155lm/W
<b>Korrelerad färgtemperatur:</b>	4000K som standard alt. 3000K beställningsvara
<b>Färgåtergivningindex: SDCM:</b>	CRI80 >3
<b>Bibehållet ljusflöde enligt L90:</b>	100,000h
<b>Bibehållet ljusflöde enligt L80:</b>	140,000h
<b>Bibehållet ljusflöde enligt L70:</b>	175,000h IESNA LM80
<b>Temperaturintervall vid drift:</b>	-35° till +35°C
<b>Underhåll:</b>	Skruvmejsel och verktygslöst klicksystem
<b>Nätspänning:</b>	100-240 V AC/50-60 Hz
<b>EMC:</b>	Driver/armatur enligt EN55015,EN61000-2-3,EN61547
<b>Optik:</b>	Linser
<b>Material:</b>	Aluminium, fästen i stålplåt, plastglas.
<b>Vikt:</b>	4,5 kg
<b>Färg:</b>	Natureloxerad aluminium, eller offert enligt önskemål .
<b>Montering / fäste:</b>	Wire hängning, takmontage, balkmontage
<b>Rekommenderad montagehöjd:</b>	2m-40m beroende på effekt och ändamål
<b>Förmonterad installationskabel:</b>	Nej



**PMMA Optics**

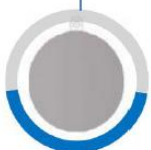
Wide-90°



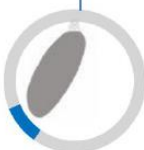
Narrow-60°



Sharp-25°



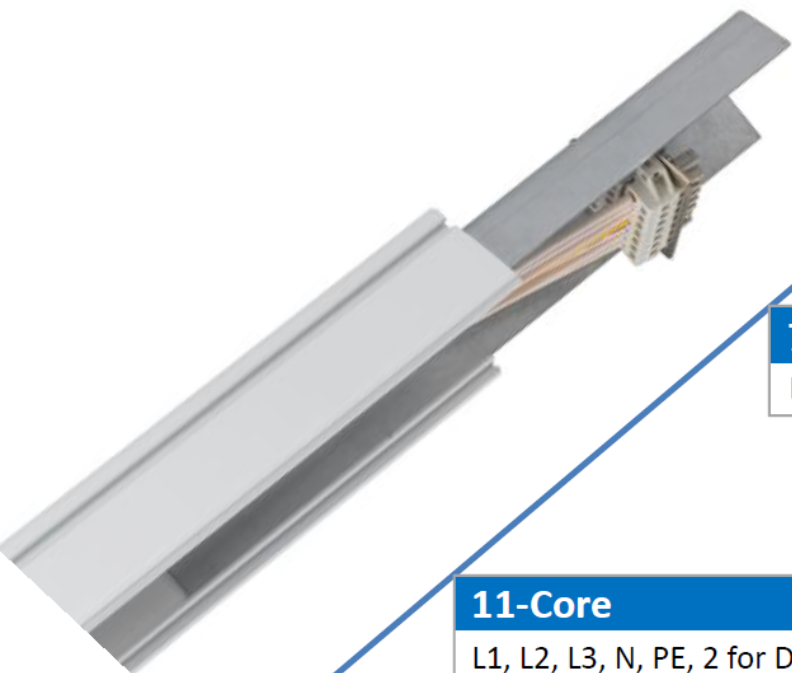
Flat-120°



Left/Right Asymmetric



Double Asymmetric



**5-Core**  
L1, L2, L3, N, PE

**7-Core**  
L1, L2, L3, N, PE, 2 for Dimming

**11-Core**  
L1, L2, L3, N, PE, 2 for Dimming, 4 for Emergency



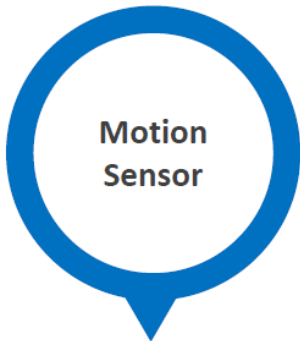
**DALI**



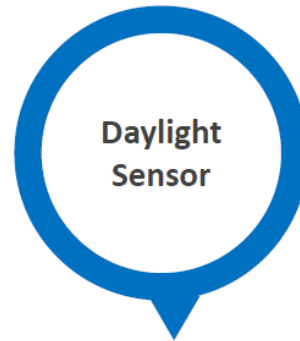
**1-10V**

- Digital Addressable
- Smart (Group/Scene Setting)
- Compatible with Sensor Module

- Convenient
- Cost Saving
- Compatible with Sensor Module



**Motion  
Sensor**



**Daylight  
Sensor**

- Compatible with DALI or 1-10V dimming module
- Two size of module: 568mm and 1414mm
- Far distance detecting: **10m** or **20m**



LED Lamp Driver



Emergency Driver

(NiMH) Battery



Cord

Rod

Chain



Surface Mounted



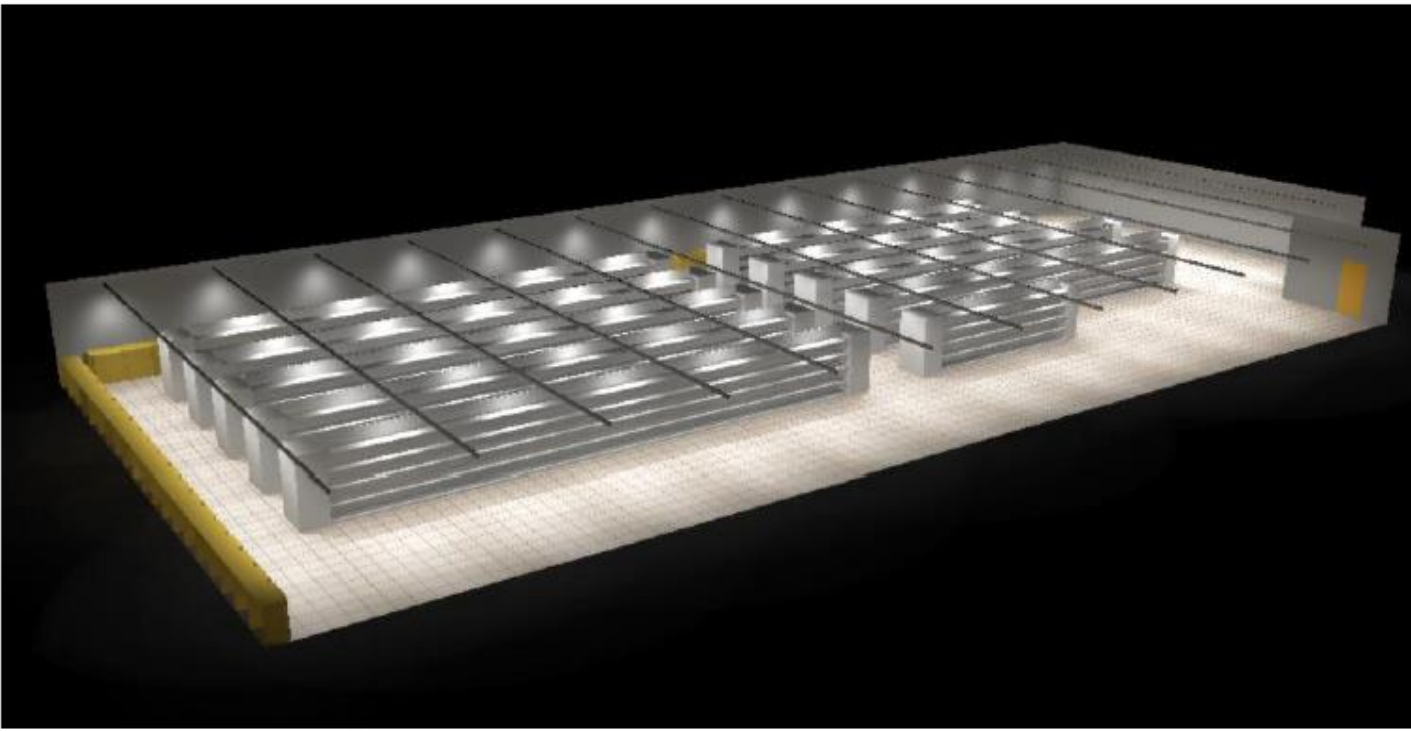
L Node Connector



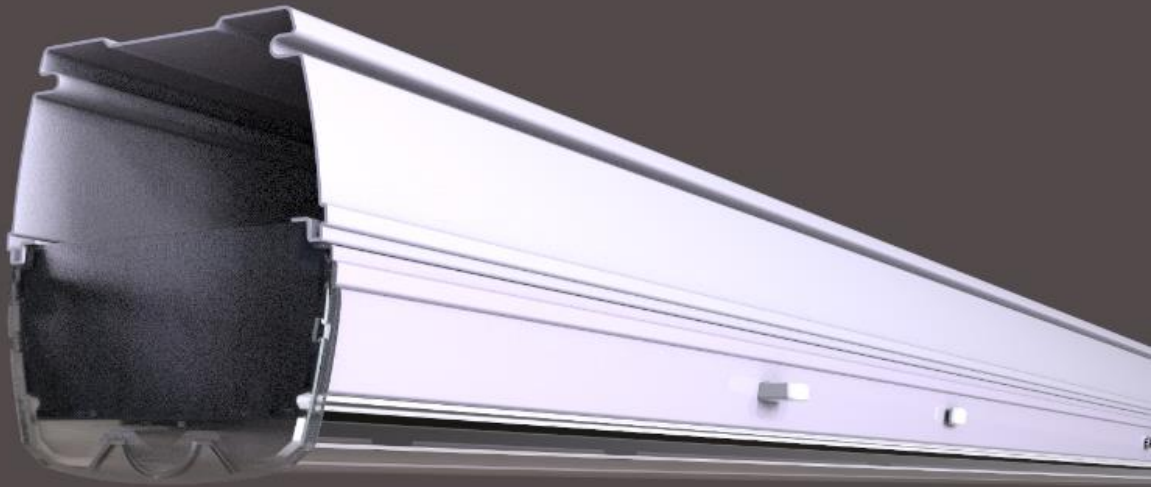
T Node Connector



X Node Connector

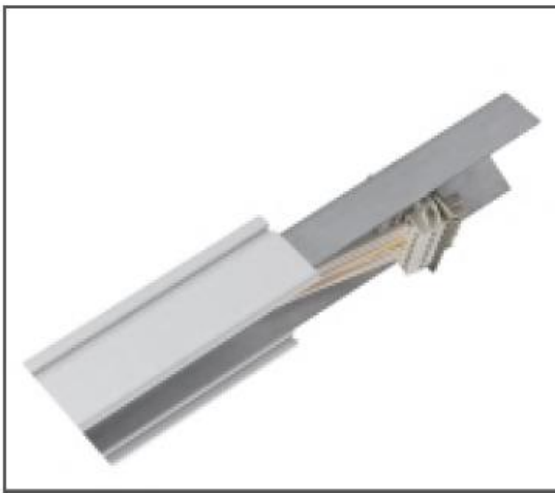






STRIHL SCANDINAVIA AB  
WWW.STRIHL.SE  
+46 (0)300-569980





5 Wire: L1, L2, L3, N,FG

8 Wire: L1, L2, L3, N, FG, CHR, + 2 wires for Dimming/Emergency

12 Wire: L1, L2, L3, N, FG, CHR, + 2 wires for Dimming  
+ 4 wires for Emergency converter & Battery

Color Option: WH(White), BK(Black), SV(Silver)

CTT: 3000K, 4000K, 5000K, 6000K

Lens: SP(Sharp-25°), NR(Narrow-60°), WD(Wide-90°), FF(Flat-120°)

DS(Double Asymmetric), RS/LS(Right/Left Asymmetric)

Power Factor: 0.95, CRI: >80Ra

Color Option: WH(White), BK(Black), SV(Silver)

600mm	5 Wire	1500mm	35W	5600lm
	8 Wire		50W	8000lm
	12 Wire		75W	12000lm
1500mm	5 Wire	3000mm	70W	11200lm
	8 Wire		100W	16000lm
	12 Wire		150W	24000lm
3000mm	5 Wire			
	8 Wire			
	12 Wire			
4500mm	5 Wire			
	8 Wire			
	12 Wire			



## Dimming Driver



1-10V Dimming

DALI Dimming

DALI PS

## Emergency Driver



with 6W output

with 12W output

## Emergency Battery



1800mAh Battery

3600mAh Battery

### Motion Sensor Module



600mm 10m detection

20m detection

1500mm 10m detection

20m detection

### Track Rail Module



600mm 5 Wire

8 Wire

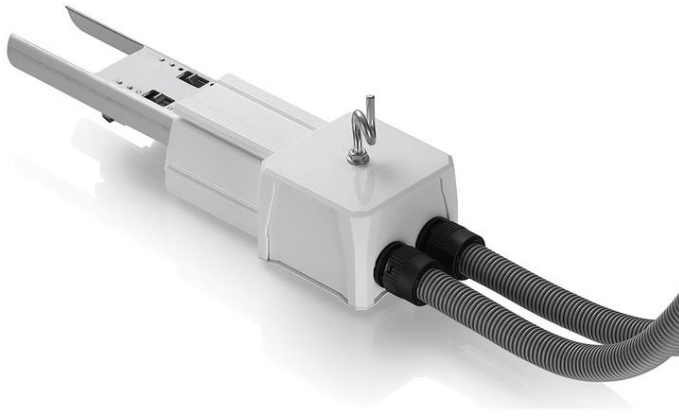
12 Wire

1500mm 5 Wire

8 Wire

12 Wire





### Feed In Box

5 Wire

8 Wire

12 Wire



### Node Connector

5 Wire

8 Wire

12 Wire



### T Node Connector

5 Wire

8 Wire

12 Wire



### X Node Connector

5 Wire

8 Wire

12 Wire



### Power Supply Module

600mm

1500mm



### E27/E14 Light Module

600mm

1500mm



### Blank Cover

PC - 600mm

PC - 1500mm



### End Cap



### Suspension Accessory

Cord-3m

Rod-1m

Chain-3m



### Surface-Mounted Accessory

for surface mounting



### Mounting Clip

with hole of diameter  
13.5mm



### Female Connector

5 Wire

8 Wire



### Wire Connector

Single Wire Connector



### Feed In Connector

5 Wire

8 Wire

12 Wire



### Conduit Gland

M20\*1.5mm, outlet 15.2mm



### Power Supply Cable

20A, 2.5mm<sup>2</sup>\*3

L: 3000mm or customized



### Cable Gland

M20\*1.5mm, outlet 14.0mm



### Conduit

inner diameter 14.1mm

L: 2000mm or customized